

40 16337 15 Avenue, Surrey

\$988,888



RARE OPPORTUNITY!! Welcome to the larger townhome units in the development spanning 1,700 square feet. Offering 4 luxurious bedrooms + 4 spacious bathrooms, the home provides ample space for family living & best value for money. A north-facing balcony creates a peaceful retreat to unwind and enjoy the tranquil surroundings. Notable features include INSTANT highway access, a double side-by-side garage, visitor parking close to the unit & BONUS city parking options. Recent updates, such as a new hot water tank in 2024, enhance the home's overall appeal. Perfectly positioned near South Meridian Elementary, Chan's Market, Playground, Transit, Shopping & Peace Arch Border. Fast completion possible. **DON'T MISS THIS**

KEY INFORMATION

MLS® R2939983

Residential Attached

King George Corridor

4 Bedrooms

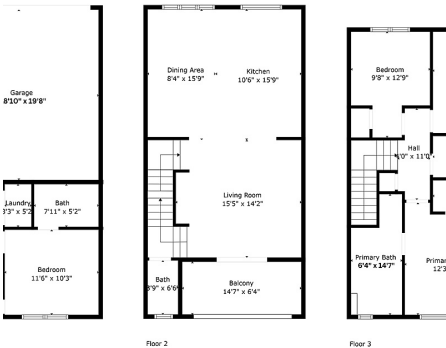
4 Bathrooms

1,700 SF

FEATURES

Year Built: 2018

Listed By: Sotheby's International Realty Canada



TOTAL: 1700 sq. ft.
FLOOR 1: 336 sq. ft., FLOOR 2: 646 sq. ft., FLOOR 3: 719 sq. ft.
EXCLUDED AREA: GARAGE: 390 sq. ft., BALCONY: 38 sq. ft.



The Measurements Provided in Our Floorplans Are Approximate And For Marketing Purposes Only. Actual Dimensions May Vary. Buyer To Verify Measurements.

