

# 1987 W 35th Avenue, Vancouver

\$6,888,000



PANORAMIC VIEWS from every level! Rare opportunity to get these breathtaking OCEAN, Mountain, Bowen Island views from this Mediterranean-style family home on exclusive West 35th Ave in Quilchena. Enjoy family fun/entertaining in large backyard with 28'x13'8 heated pool, plenty of garden space to exercise your green thumb. Decks/terraces on every level offer quiet areas to enjoy morning coffee, curl up with a book, dine al fresco at golden hour/sunset. Large 4410sf house has 6 BR/6 BA, flexibility on Lower level for nanny suite. Outstanding QUIET neighborhood just 5-min walk to Point Grey Secondary & Quilchena Elementary; short drive to local high-rated Private Schools. Walk to great Kerrisdale shops/restaurants, Arbutus Club. Recent upgrades: \$140k on landscaping, \$286k on interior.

## KEY INFORMATION

MLS® R2940256

Residential Detached

Quilchena

6 Bedrooms

6 Bathrooms

4,410 SF

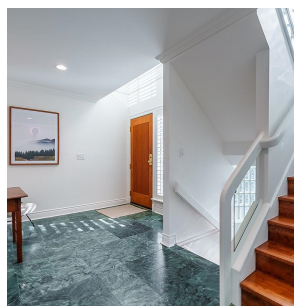
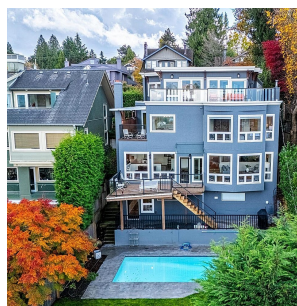
7,330 SF Lot

## FEATURES

Year Built: 1988

Views: PANORAMIC ocean/mountain views

Listed By: RE/MAX Select Properties



rennie