

17163 58 Avenue, Surrey

\$1,299,900



Builder's special on large 7375 sqft lot (62x118)! Nicely updated rancher situated among new homes. Very private. Updates include roof, windows, furnace/air conditioning, hot water tank, kitchen cabinets and laundry area. Kitchen features newer appliances as well as laundry room. New flooring throughout. Spacious bedrooms and master bedroom includes walk-in closet and ensuite with dry sauna. Covered patio. Great location for Hwy 1 or 10, new hospital and walk to downtown Cloverdale. George Greenaway Elementary and Lord Tweedsmuir Secondary school catchments. Perfect location!

KEY INFORMATION

MLS® R2939828

Residential Detached

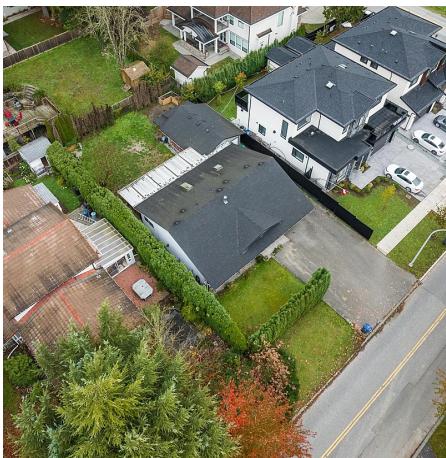
Cloverdale

3 Bedrooms

2 Bathrooms

1,603 SF

7,375 SF Lot



FEATURES

Year Built: 1975

Listed By: Homelife Benchmark Realty Corp.



rennie