

169 1330 Wellon Street, Coquitlam

\$1,398,000



Come home to this spacious 4 bed 3.5 bath townhome at Polygon's Partington Creek in Coquitlam. This bright 1,936 sq. ft. townhome boasts overheight ceilings, laminate wood flooring, expansive windows and a den off the kitchen. The kitchen offers a central island, custom-designed cabinetry, sleek appliances and engineered stone countertops. The main bedroom offers a large walk-in closet and the ensuite features a tub and spa shower with bench. Plus, all homes offer AC, a double car garage with a Level 2 EV outlet, and exclusive access to the Creekside Club - a resident's only clubhouse full of amenities for the whole family! Visit our sales office and three display homes at 3674 Victoria Drive to learn more.

KEY INFORMATION

MLS® R2940083

Residential Attached

Burke Mountain

4 Bedrooms

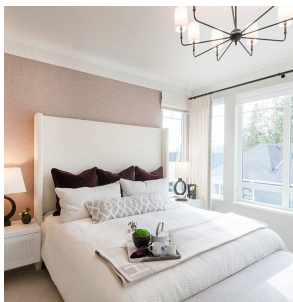
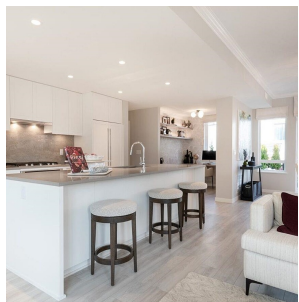
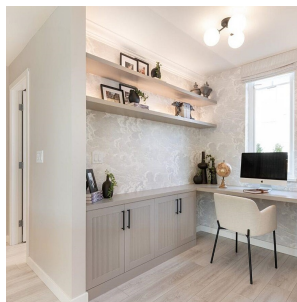
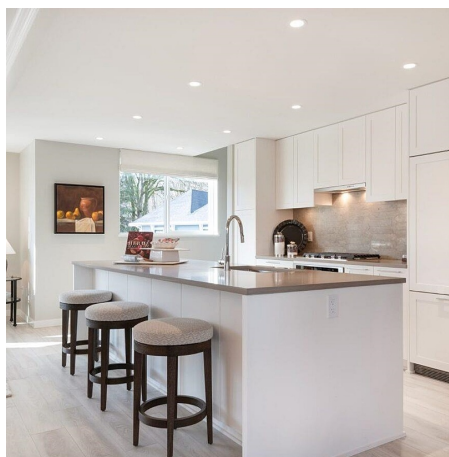
4 Bathrooms

1,936 SF

FEATURES

Year Built: 2025

Listed By: Polygon Realty Limited



rennie