

9232 Wedgemount Plateau Drive, Whistler

\$1,499,000



WedgeWoods is Whistler's best new neighbourhood. There are a very limited number of lots let to purchase and this one is a stunning clifftop parcel on the very edge of the development which border Garibaldi National Park. The serenity of this natural landscape is conveniently situated just 15 minutes from Whistler Village. This is truly the building opportunity you've been waiting for; at nearly 1 acre this lot has a 4629 max buildable (plus exemptions for basement, garage, mechanical etc.) and depending on your design, could require minimal site preparation. Dream big and incorporate the beautiful rocky knoll into your masterpiece or cantilever living space off the cliff! The world is your oyster with this one and the possibilities are endless.

KEY INFORMATION

MLS® R2940413

Land Only

Wedge Woods

0 Bedrooms

0 Bathrooms

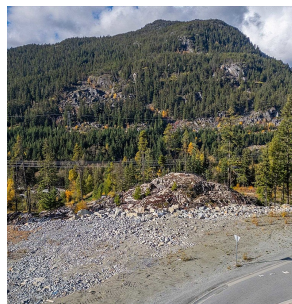
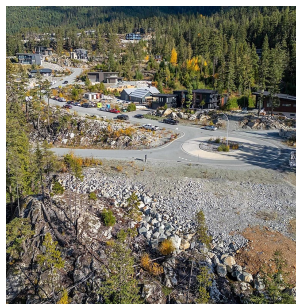
0 SF

42,514 SF Lot

FEATURES

Views: Glorious Mountain Views

Listed By: Angell Hasman & Associates Realty Ltd.



rennie