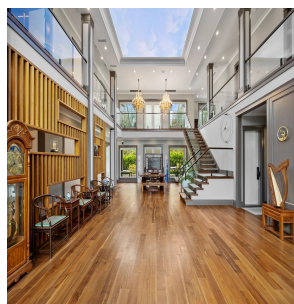
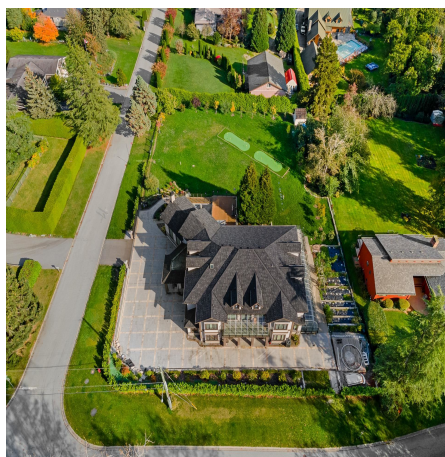
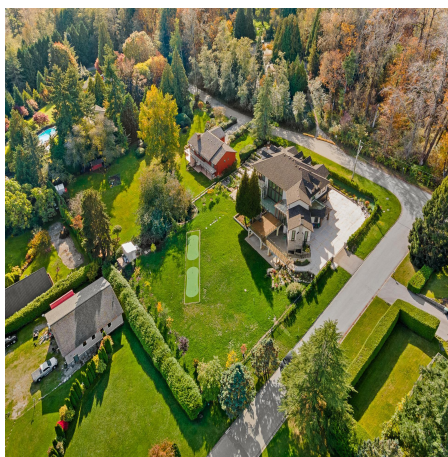


# 1888 180 Street, Surrey

\$6,280,000



Nestled on a sprawling one-acre lot directly across from the renowned Redwood Park, this magnificent estate offers over 10,000 square feet of luxurious living across three levels. The main and upper floors each feature a grand master suite, with a total of eight ensuite bedrooms and 7.5 elegantly appointed bathrooms. An expansive sunroom invites natural light, while the one-of-a-kind great room impresses with its extraordinary scale and soaring 20-foot ceilings—perfect for grand entertaining. The basement includes a private two-bedroom suite for in laws or guests. Located just minutes from the highly anticipated Saint John Paul II Academy, opening in Fall 2025. Inside, enjoy breathtaking views of the valley and an exquisite blend of elegance, space, and scenic beauty awaits.

## KEY INFORMATION

MLS® R2939651

Residential Detached

Hazelmere

8 Bedrooms

8 Bathrooms

10,042 SF

43,646 SF Lot

## FEATURES

Year Built: 2023

Views: MOUNT BAKER & HAZELMERE VALLEY

Listed By: Century 21 Coastal Realty Ltd.

rennie