

1239 Confederation Drive, Port Coquitlam

\$2,328,888



Welcome to this stunning 3,959 sq ft 2 storey + bsmt (incl. 3 BEDROOM MORTGAGE HELPER) on a 5,500 sq ft lot in desirable CITADEL, PORT COQUITLAM across Settlers Park. This home is extensively renovated and features an open concept floor plan with generously sized bedrooms, living areas, and kitchen. The kitchen features stainless steel appliances, quartz countertops, and a large eating area. Upstairs has 4 bedrooms including a master bedroom with a large walk-in closet and a spa-like ensuite. The basement includes a 3 bedroom mortgage helper with insuite laundry. The backyard is perfect for entertaining and features a water fountain and extensive landscaping throughout. Enjoy MOUNTAIN VIEWS from your balcony! Schools, shops, restaurants and Highway 1 are within a short driving distance!

KEY INFORMATION

MLS® R2940079

Residential Detached

Citadel

7 Bedrooms

4 Bathrooms

3,959 SF

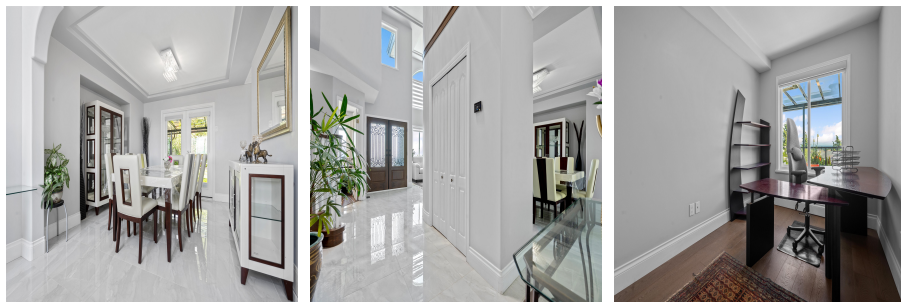
5,500 SF Lot

FEATURES

Year Built: 1995

Views: Mountain, City & Park

Listed By: Real Broker B.C. Ltd.



rennie