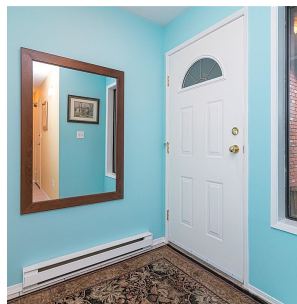


13 1950 Cultra Ave, Central Saanich

\$639,900



This beautifully maintained 3-bed, 3-bath townhouse, with double car garage is nestled among lush gardens and green spaces in a peaceful community setting. This move-in-ready home offers endless potential for customization, allowing you to build equity by upgrading the kitchen and bathrooms to your taste. The main floor features a bright sunken living room with a cozy, newer gas fireplace (2021), leading to a double patio—ideal for enjoying your private outdoor retreat. A spacious kitchen with newer appliances, pantry and separate dining room which provides the perfect flow for entertaining. There is also a half bath with full laundry. Upstairs, there is a spacious primary bedroom with 4 piece ensuite, large skylight, and access to a newly rebuilt sundeck. There are also two more bedrooms and full bathroom. Recent upgrades include a new roof 2022 and fresh exterior paint. The strata has no age restrictions, allows pets, and is ideally located within walking distance of the Saanich Peninsula Village's shops, restaurants, medical services, and more, while still enjoying the serenity of a quiet, residential neighborhood. Plus, you're just a short drive to the airport, ferries, and downtown Victoria. (id:56120)



KEY INFORMATION

MLS® 979541

Residential Attached

Saanichton

3 Bedrooms

3 Bathrooms

1,910 SF

1,910 SF Lot

FEATURES

Year Built: 1981

Listed By: Pemberton Holmes Ltd. - Oak Bay

rennie