

# 604 9456 134 Street, Surrey

\$515,000



Welcome to The Quinn by Porte Development—a vibrant new addition to Surrey Central's thriving community! Discover the charm of this 1-bedroom plus den unit, featuring an expansive 63 sq ft balcony that's perfect for outdoor relaxation and entertaining. This bright and airy residence boasts an exceptional open floor plan with a stylishly appointed kitchen, large bedroom, and versatile den. High-quality laminate flooring throughout. Enjoy convenient access to shopping, SFU and future UBC Campus, diverse dining options, public transportation, parks and Surrey Memorial hospital. This assignment of contract with est. Dec 2024-Feb 2025 completion is perfect for first-time buyer or investors! Contact today!

## KEY INFORMATION

MLS® R2940498

Residential Attached

Queen Mary Park

1 Bedroom

1 Bathroom

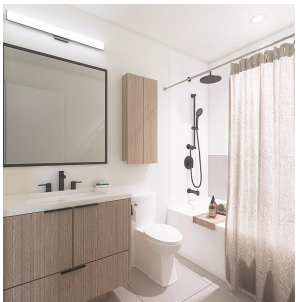
580 SF

\$354.69 Maintenance Fees

## FEATURES

Year Built: 2024

Listed By: Woodhouse Realty



rennie