

# 414 3226 Shelbourne St, Saanich

\$580,900

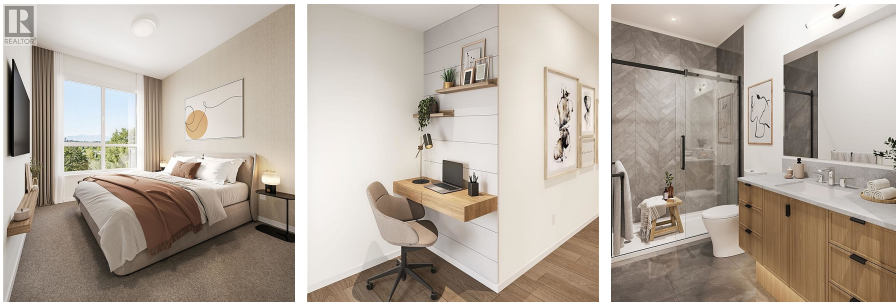


Nestled in the urban neighbourhood of the Shelbourne Valley, Oak & Stone by Abstract Developments sets the standard for vibrant, west coast living. This light-filled, thoughtfully designed 1 Bed + Den, 1 Bath home boasts over-height ceilings and expansive windows through 546 sq ft of open living space. A bright and airy kitchen featuring quartz countertops, under cabinet lighting, soft-close cabinets, matte black hardware and premium stainless-steel appliance package becomes a hub for entertaining & hosting. In-home flex space offers a versatile area that can be used in various ways to suit your lifestyle and needs. Contemporary interior design featuring two colour palettes to choose from, luxury vinyl plank flooring and cozy broadloom carpet in bedroom. Includes one parking space and cycling-friendly amenities including dedicate secured bike storage with e-bike charging. Centrally located, Oak & Stone is minutes away from parks, schools, beaches and everyday essentials. Price + GST. Presentation Centre located at 3198 Douglas. (id:56120)



## KEY INFORMATION

MLS® 979818  
Residential Attached  
Cedar Hill  
1 Bedroom  
1 Bathroom  
608 SF  
608 SF Lot



## FEATURES

Year Built: 2026  
Listed By: Newport Realty Ltd.

**rennie**