

15 4355 Viewmont Ave, Saanich

\$999,900



Welcome to The Reeve – a serene and well-maintained complex offering this bright, contemporary 3-bed, 3-bath townhouse. Step into the main level’s open-concept living space, adorned by large windows that fill the space with natural light, and a modern kitchen that awaits with stainless steel appliances, a gas stove, quartz countertops, and soft-close cabinetry. Cozy up by the gas fireplace or step outside to enjoy the stone patio. Upstairs, you’ll find 3 spacious bedrooms, including a primary suite with tall ceilings, a walk-through closet, and a luxurious 4-piece ensuite featuring heated floors. A large laundry closet on this level adds convenience. This unit has TWO designated parking spaces – a garage and an attached open-air stall. Ideally located within walking distance of Royal Oak Shopping Centre and Brydon Park, this home combines style, comfort, and convenience. Don’t miss this fantastic opportunity! (id:56120)

KEY INFORMATION

MLS® 979201

Residential Attached

Royal Oak

3 Bedrooms

3 Bathrooms

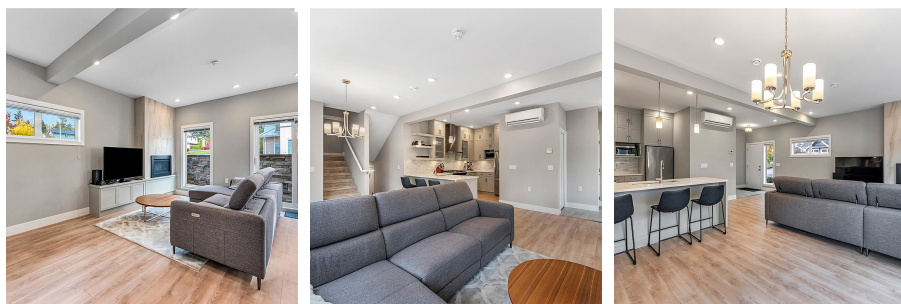
1,587 SF

1,587 SF Lot

FEATURES

Year Built: 2020

Listed By: rennie & associates realty ltd.



Haden Campbell

250.882.9314

hcampbell@rennie.com

rennie.com/hadencampbell

rennie