

# 214 1850 E Southmere Crescent, Surrey

\$449,900



CENTRALLY LOCATED UNIT WITHIN JUST MINUTES OF DRIVING TO WHITE ROCK. This unit has been RECENTLY UPDATED, with NEW LAMINATE FLOORING, QUARTZ COUNTERTOPS, NEW PAINT, NEW LIGHTING FIXTURES, NEW APPLIANCES AND MORE! Boasting with brightness and space this unit is move in ready! A LARGE DEN BIG ENOUGH TO BE USED AS A SECOND BEDROOM Steps away from the newly proposed Semihamoo Mall redevelopment, which will include 3 residential towers and 46,000 SQ FT OF SHOPPING AREA. This is an investment that definitely checks off all the boxes for every type of buyer! Not the mention that the building has been consistently maintained throughout, was fully rain-screened in 2015 and new boiler. Book your showing today!

## KEY INFORMATION

MLS® R2940782

Residential Attached

Sunnyside Park

1 Bedroom

1 Bathroom

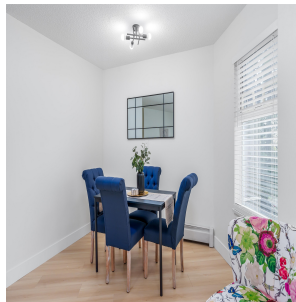
891 SF

\$515.57 Maintenance Fees

## FEATURES

Year Built: 1982

Listed By: Oakwyn Realty Ltd.



rennie