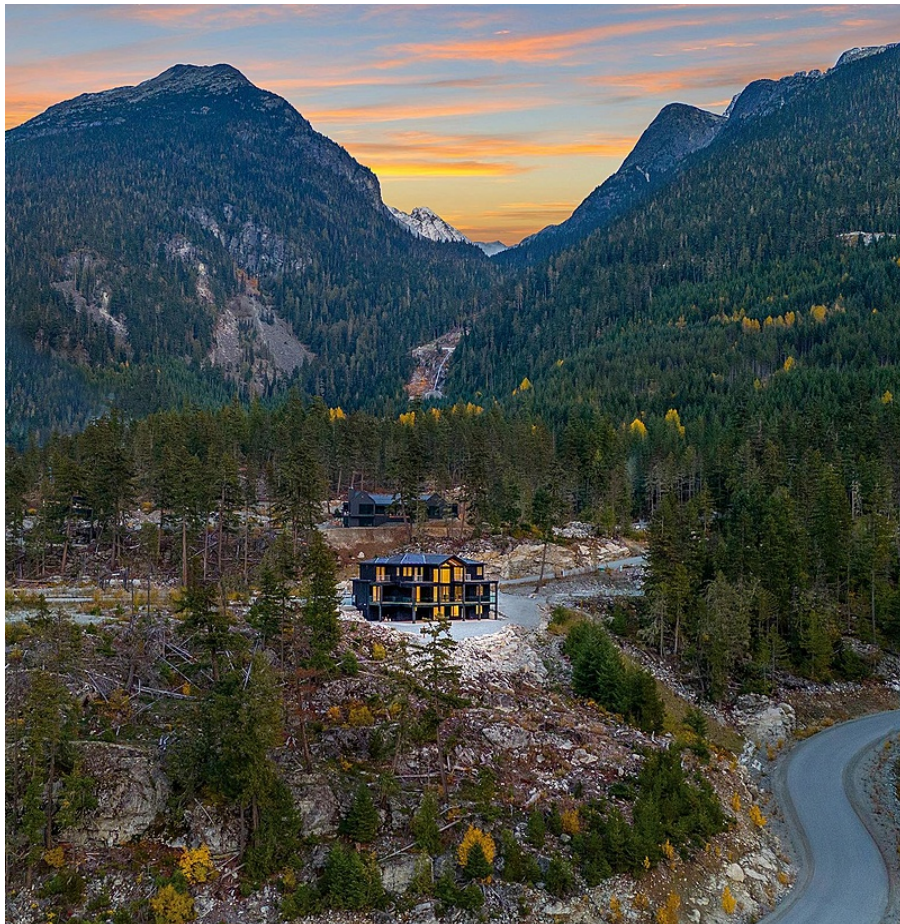


# 9333 Warbler Way, Whistler

\$5,295,000



Elevated on the panoramic plateau of Whistler's WedgeWoods estate-home community, enjoy expansive views, sophisticated comfort, and enviable access to some of the area's best trail networks. The contemporary lines of the interior welcome an abundance of natural light to the main living area with seamless indoor-outdoor living to a large, covered deck making it ideal for entertaining. Positioned on over 0.8 acres there is expansion opportunity for an auxiliary dwelling, while the current residence offers four spacious bedrooms, family, and wine room & office, plus the flexibility of a 2-bedroom suite along with the convenience of a triple-car garage for outdoor gear and toys. Listing photography has been virtually staged.

## KEY INFORMATION

MLS® R2940846

Residential Detached

Wedge Woods

4 Bedrooms

6 Bathrooms

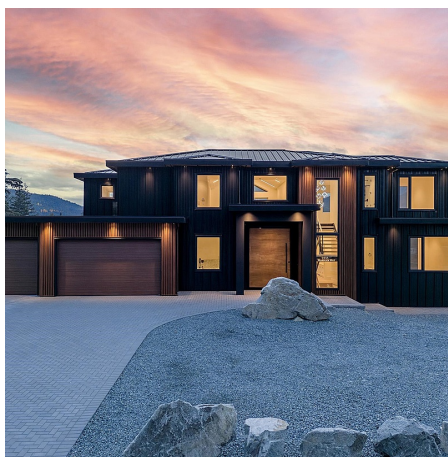
4,770 SF

## FEATURES

Year Built: 2023

Views: Whistler Valley Mountains

Listed By: Whistler Real Estate Company Limited



rennie