

1201 6188 Wilson Avenue, Burnaby

\$1,199,900



JEWEL - an exclusive and prestigious address by award winning Boffo Development. This 2 BED 2 BATH in the south tower offers an efficient 1071 SF floor plan with HUGE covered balcony and mountain views from every room. The showstopper kitchen with SS appliances, tons of cabinetry, centre island, wine cooler and gas cooking will inspire every home chef! Non-adjacent bedrooms for restful nights, higher 8'10 ceilings, insuite laundry and comes with 1 parking and 1 locker. Luxury amenities include party lounge with kitchen, gym with steam & hot tub, kids playground and everyday friendly concierge. PRIME but quiet Metrotown location, steps to Metrotown, Station Square, Crystal Mall, library, Central Park, Bonsor Recreation and Patterson Skytrain. Everything you need is here!

KEY INFORMATION

MLS® R2941006

Residential Attached

Metrotown

2 Bedrooms

2 Bathrooms

1,071 SF

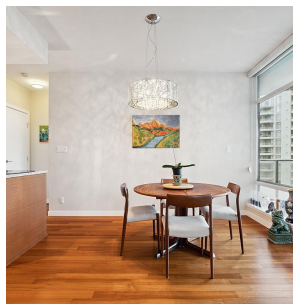
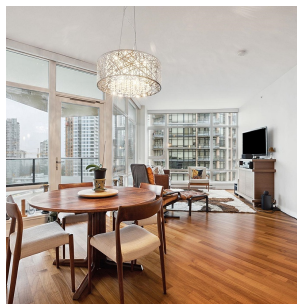
\$611.37 Maintenance Fees

FEATURES

Year Built: 2010

Views: CITY AND MOUNTAINS

Listed By: rennie & associates realty ltd.



Salina Kai PREC*
604.773.7013
skai@rennie.com
rennie.com/salinakai



Danny Chow PREC*
604.765.2469
dchow@rennie.com
rennie.com/dannychow

rennie