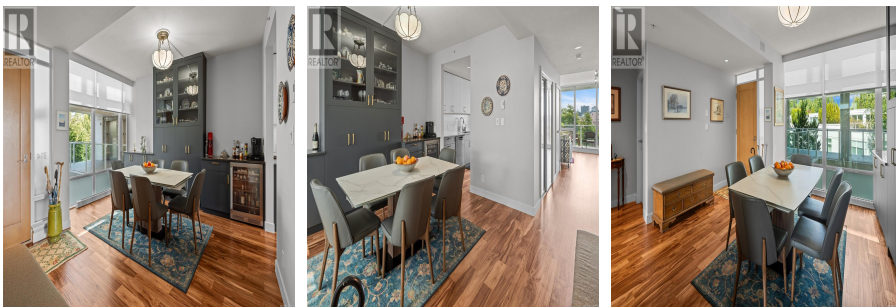
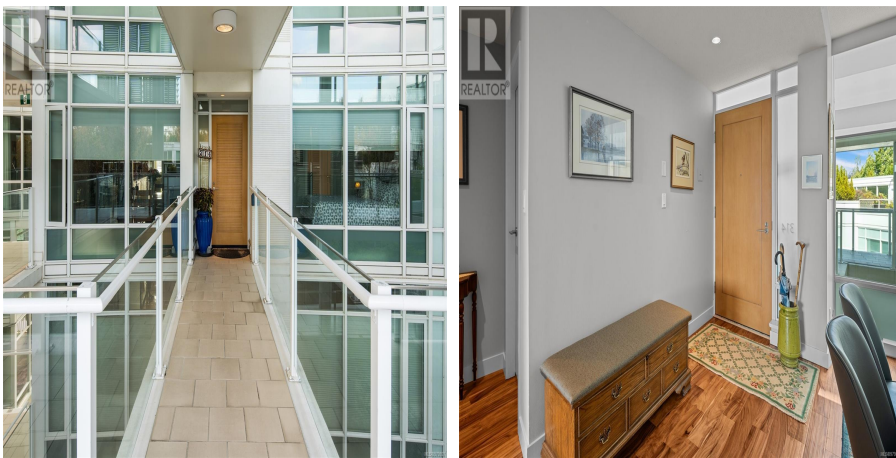


314 68 Songhees Rd, Victoria

\$1,365,000



This exquisite south-facing corner unit in the sought-after Shuttters complex now boasts a new custom kitchen and powder room, and brand new hardwood floors and carpets, enhancing its already luxurious appeal. The brand new kitchen features new Bosch appliances, custom cabinetry and quartz countertops, seamlessly connecting to the dining room with built-in cabinets and a beverage bar. With 9' ceilings and expansive windows that frame captivating harbour views, this gracious 2 bed and 2.5 bath condo offers a spacious light-filled living room with expansive south-facing balcony, your front-row seat to the beauty of Victoria. The Primary Bedroom's luxurious ensuite includes heated floors, a large soaker tub, a separate shower, and a walk-in closet. The second bedroom, also with an ensuite, ensures comfort and privacy for your guests. Located just a short walk from downtown Victoria, this condo provides easy access to great restaurants and shopping, while still offering a quiet escape near the scenic waterfront Westsong walkway. The Shuttters Residences define elegance with tranquil water gardens, iconic architecture, and superb resort-style amenities, including a heated outdoor lap pool, two hot tubs, a steam room, a sauna, and a fitness center. (id:56120)

KEY INFORMATION

MLS® 979897

Residential Attached

Songhees

2 Bedrooms

3 Bathrooms

1,623 SF

1,623 SF Lot

FEATURES

Year Built: 2007

Listed By: Century 21 Queenswood Realty Ltd.

rennie