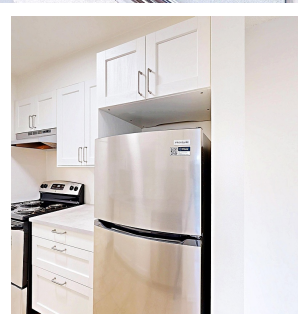
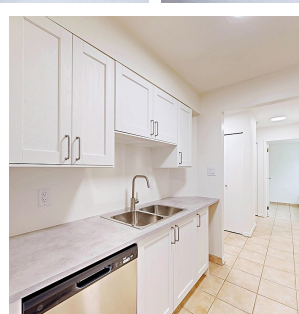
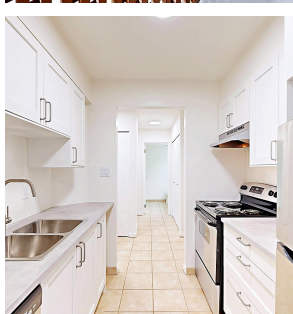


410 340 Ginger Drive, New Westminster

\$499,900



First Time Buyers and Investors take notice of this newly updated Two Bedroom One Bathroom suite in the tranquil Fraser Mews community. New flooring, cabinets and stainless steel appliances make this move in ready home a gem. The location is ideal, adjacent to Queens Park, the new Temesewtx Aquatic Centre and Glenbrook Ravine. Close to Elementary and Secondary Schools, Colleges and the Royal Columbia Hospital and just steps to transit connections. Pets and Rentals allowed with restrictions.

KEY INFORMATION

MLS® R2941262

Residential Attached

Fraserview

2 Bedrooms

1 Bathroom

885 SF

\$385.01 Maintenance Fees

FEATURES

Year Built: 1986

Views: Mountains

Listed By: Heller Murch Realty

rennie