

107 10388 No. 2 Road, Richmond

\$1,748,000



This luxurious CORNER unit townhouse at Kingsley Estates by Polygon located in Richmond's sought-after Stevenston neighborhood, introduces a new level of luxury, 15-acre park IN FRONT OF your door. Spacious 4 Bed en-suites residence exudes quiet luxury through architectural details. 1 Bedroom en-suites on 1st floor. Comfortably heated flooring and DOUBLE sink in master bathroom. The modern kitchen has a huge central island, a walk-in pantry, high-end appliances, gas cooktop and wall oven, 10' ceilings on main. Exclusive use of the 2,000 sf clubhouse: fully equipped gym, social lounge, kids play area and day care. Double garage side by side parking. Enjoy the infinite green park view in front of your unit and the unlimited LUXURY living style. Open House: Dec 14&15, Sat&Sun at 2-4pm.

KEY INFORMATION

MLS® R2941743

Residential Attached

Woodwards

4 Bedrooms

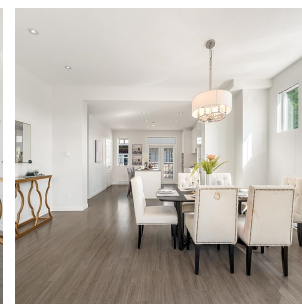
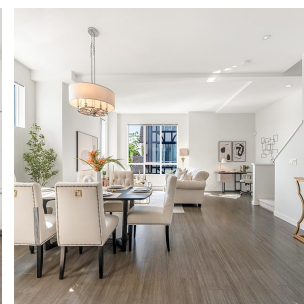
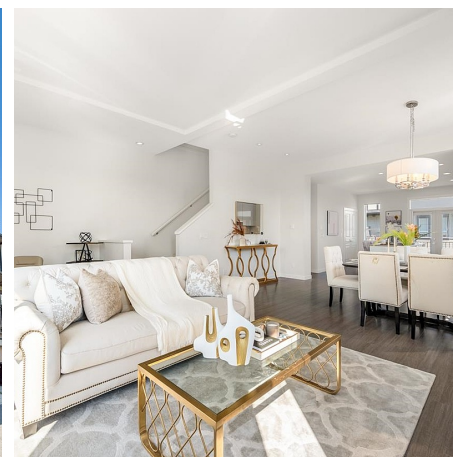
5 Bathrooms

2,002 SF

FEATURES

Year Built: 2017

Listed By: Nu Stream Realty Inc.



rennie