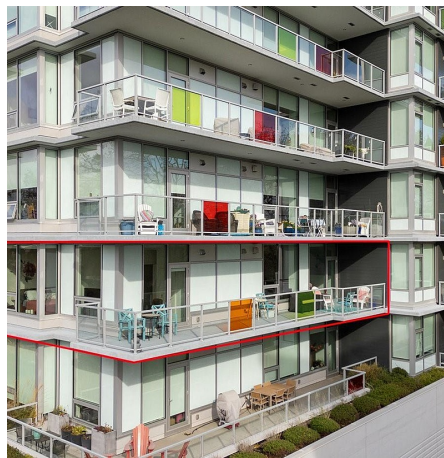


204 4011 Rainbow Hill Lane, Saanich

\$819,900



This luxurious one owner suite is perched high atop Christmas Hill at Lyra, a sleek, modern, steel and concrete building designed by renowned architects de Hoog and Kierulf. Contemporary design and premium finishes include 9.5' ceilings, engineered wood and heated tile flooring, expansive windows, a custom closet system, a chef's kitchen, and a gas fireplace. This spacious 2-bedroom suite is on the Southwest corner and is filled with an abundance of light, and views towards Swan Lake nature sanctuary and the Olympic mountains. It has an open floor plan and 2 spa-like bathrooms. Ideal for entertaining, it boasts a 45' balcony and a large island kitchen. There is secure underground parking, a separate storage locker, and a fitness room. Lyra is beautifully crafted and conveniently located to Uptown and Saanich Center, and all levels of schools including UVIC. At your doorstep are walking and riding trails, play parks and nature sanctuaries...a beautiful place to call home. (id:56120)



KEY INFORMATION

MLS® 980178

Residential Attached

High Quadra

2 Bedrooms

2 Bathrooms

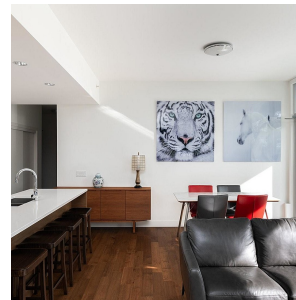
1,098 SF

1,097 SF Lot

FEATURES

Year Built: 2020

Listed By: RE/MAX Camosun



rennie