

# 110 2853 Helc Place, Surrey

\$1,385,888



Your South Surrey home search is over! Welcome to the beautiful Hyde Park, this spacious 4 bedroom 4 bathroom townhouse boast over 2,600 sq ft of luxurious living space that features a modern kitchen with granite counter tops and stainless steel appliances, laminate flooring and a cozy living area. Enjoy outdoor living with a PRIVATE patio and a serene backyard, providing an inviting space for relaxation or entertaining guests. Located in a family-oriented neighbourhood, this property is just minutes from excellent schools, Morgan crossing shopping centre, recreational facilities and, convenient public transit options AND 15 minutes away from the white rock pier. Don't miss out on this exceptional opportunity to own a home that truly has it ALL! QUICK POSSESSION POSSIBLE!

## KEY INFORMATION

MLS® R2941677

Residential Attached

Grandview Surrey

4 Bedrooms

4 Bathrooms

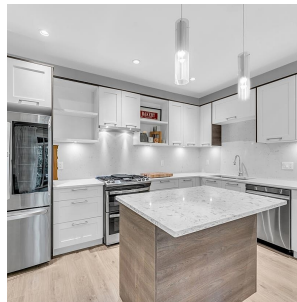
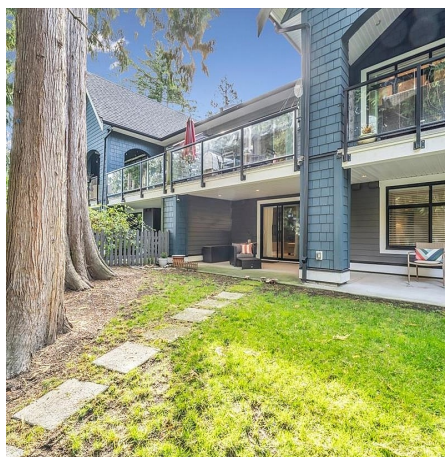
2,613 SF

## FEATURES

Year Built: 2016

Views: Overlooks Park/North Rear Park

Listed By: Keller Williams Ocean Realty



rennie