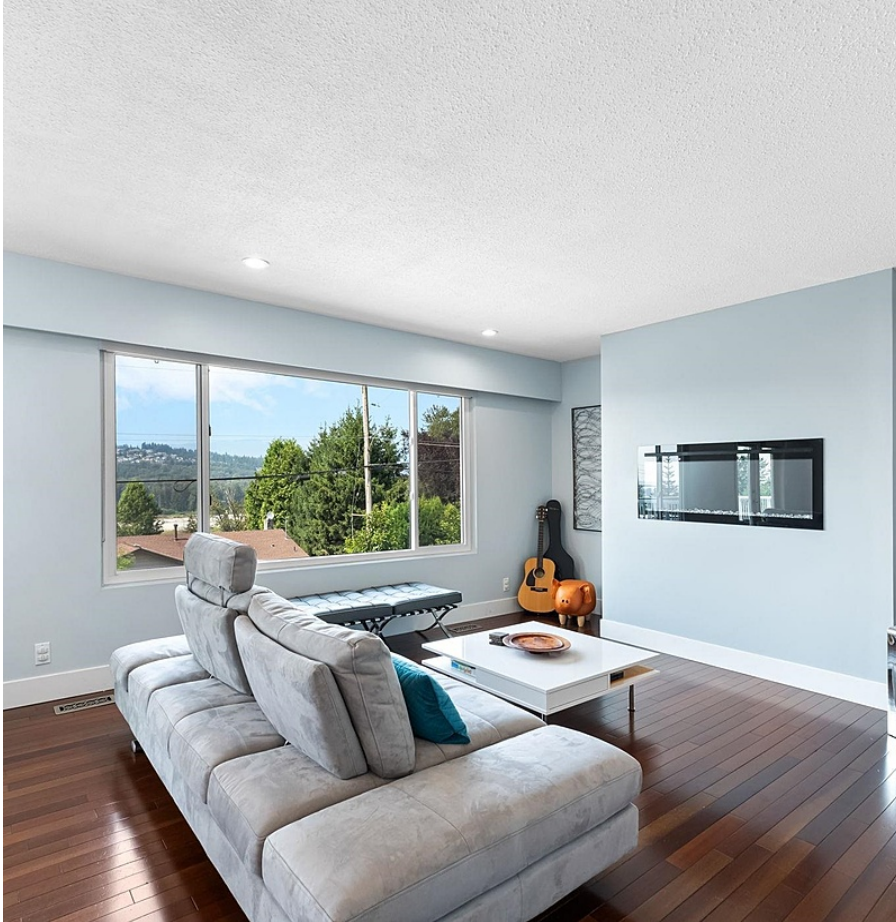


# 1480 Elinor Crescent, Port Coquitlam

\$1,597,000



Beautifully Renovated Home with Mountain Views! Experience modern living in this fully renovated home on a prime corner lot in Port Coquitlam's desirable Mary Hill. Boasting brand-new appliances, an instant hot water tank, air conditioning, and a spacious double car garage, this home is ready for you to move in and enjoy. With potential for future subdivision and the ability to easily add a suite, the possibilities are endless. Located close to highways, shopping, top schools, parks, and the new "Poco Climb," this home offers both convenience and comfort.

## KEY INFORMATION

MLS® R2941874

Residential Detached

Mary Hill

4 Bedrooms

3 Bathrooms

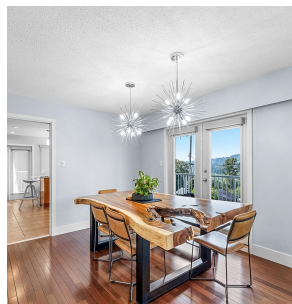
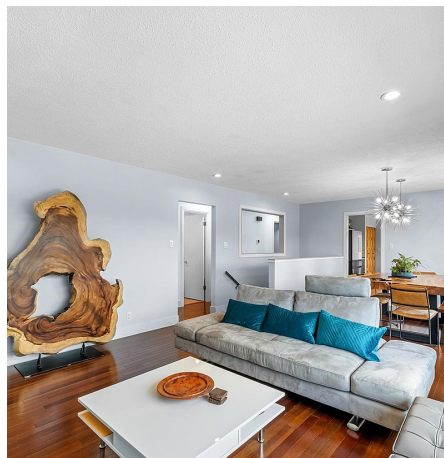
2,260 SF

7,705 SF Lot

## FEATURES

Year Built: 1969

Listed By: Stonehaus Realty Corp.



rennie