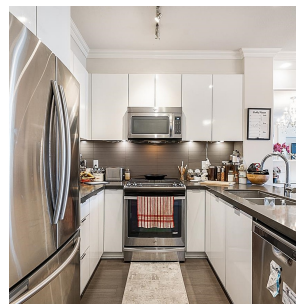
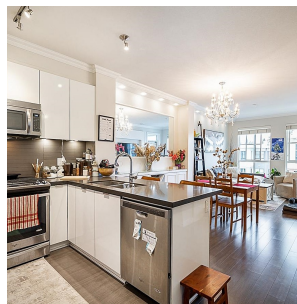
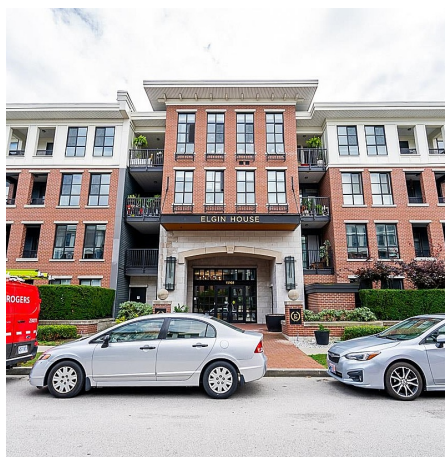


416 15168 33 Avenue, Surrey

\$645,000



Welcome to Elgin House, situated in the Harvard Gardens community of South Surrey, developed by Polygon. This immaculate penthouse offers 2 bedrooms and 2 bathrooms with a thoughtfully designed open layout perfect for entertaining. Enjoy standout features such as a striking tile accent wall, elegant quartz countertops, built-in closets, stainless steel appliances, and a gas range, all enhanced by stylish finishes throughout. The location is ideal, with easy access to schools, golf courses, restaurants, transit, shopping, and many more amenities. Residents also have exclusive access to a private community clubhouse, featuring an outdoor pool, hot tub, gym, fitness facilities, and lounge. Additionally, the unit includes 1 parking space, adding to the convenience of this exceptional living.

KEY INFORMATION

MLS® R2941806

Residential Attached

Morgan Creek

2 Bedrooms

2 Bathrooms

871 SF

\$392.39 Maintenance Fees

FEATURES

Year Built: 2016

Listed By: RE/MAX 2000 Realty

rennie