

31 Saanich Ridge Dr, Central Saanich

\$749,800



Discover relaxed living in this charming two-bedroom, two-bathroom rancher nestled in Saanich Ridge Estates, a vibrant family community bordered by lush old-growth forests. Ideally located near the Victoria International Airport and Swartz Bay ferry terminal, this home offers the best of both privacy and convenience. Enjoy seamless, open-concept living with a spacious kitchen and combined living/dining area perfect for entertaining. The primary bedroom boasts a large walk-in closet and a stunning ensuite bathroom. Additional features include an oversized single garage and a fully-fenced, low-maintenance yard. Monthly fee is \$550/month. Saanich Ridge Estates is a thoughtfully planned residential leasehold community, offering exceptional value in today's market. (id:56120)

KEY INFORMATION

MLS® 980119

Residential Detached

Hawthorne

2 Bedrooms

2 Bathrooms

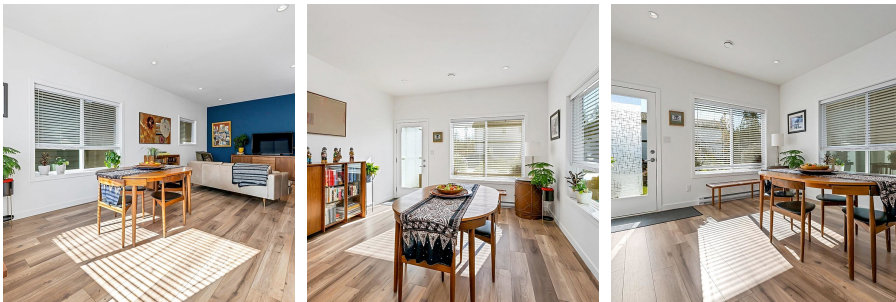
2,120 SF

3,621 SF Lot

FEATURES

Year Built: 2023

Listed By: RE/MAX Generation



rennie