

3 2325 Ranger Lane, Port Coquitlam

\$982,800



FREMONT BLUE by Mosaic. Contemporary townhomes in a live-work play neighbourhood on the shores of Pitt River adjacent to Fremont village & 25km of walking, running, & cycling on the Traboulay Trail. Amenities include an outdoor pool, indoor basketball court, weight room, party room, playground and more. All for a modest strata fee \$422. Professionally measured 1,560 sf interior space. Flexible floor plan with a centre island kitchen on main floor. Two large bedroom on top floor. Extra den that can easily convert to a bedroom. 3 full baths. 1 car garage plus a longer drive way that gives you extra parking. Move in ready. Easy to show.

KEY INFORMATION

MLS® R2942083

Residential Attached

Riverwood

2 Bedrooms

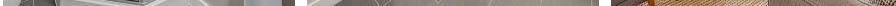
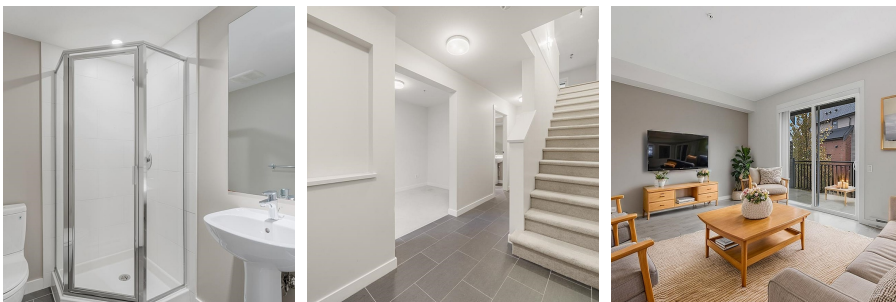
3 Bathrooms

1,560 SF

FEATURES

Year Built: 2015

Listed By: RE/MAX City Realty



rennie