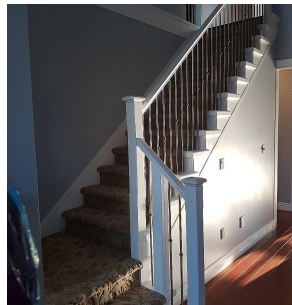


5249 Chesham Avenue, Burnaby

\$1,898,000



Superb half duplex in this fantastic Central Park location - A must view home - with easy access to amenities including: Shops - MetroTown, Parks, Transit, Rec Facilities, Schools, BCIT, Burnaby Hospital and more. Experience the functional floor plan ideal for growing or larger family. This bright home with East / West exposure and huge windows boasts 12 foot vaulted ceilings in living and dining rooms. Custom finishes including granite counters, Designer - chef styled kitchen, laminate floors, beautiful mouldings and trim work including coffered ceilings, Built-in cabinetry, Gas fireplace, Stainless steel appliances. 4 bedrooms + den / 5 bedrooms, 3 full bathrooms and guest powder room. Separate laundry room, Attached garage with additional parking. Call to arrange a private showing.

KEY INFORMATION

MLS® R2942189

Residential Attached

Central Park

4 Bedrooms

4 Bathrooms

2,183 SF

8,136 SF Lot

FEATURES

Year Built: 2007

Listed By: RA Realty Alliance Inc.

rennie