

3843 Graceland Dr, Metchosin

\$995,000



This lovely 3200sf Metchosin home is situated on a quiet cul de sac hidden at the apex of a rocky bluff. Sitting comfortably in it's natural setting of Oak/ Arbutus trees and native plants. A sunny stonepaved terrace off the kitchen, and large South West facing deck with panoramic views of the lush one acre property. The uniqueness of the floorplan and design elements add to the warmth and charm of the home. The foyer is spectacular with lighted ceiling art niche, and a 20ft cathedral vaulted ceiling in the living area with various shaped windows and numerous french doors that invite the natural light inside. Primary bedroom on the main floor, along with a loft style bedroom suite on upper level. Three bedrooms on lower level with custom doors creating separation. Enjoy the tranquil setting from all the various decks and patios. Close to Beaches, walking trails, bus routes & less than 10 min. to West Shore Core. (id:56120)

KEY INFORMATION

MLS® 979263

Residential Detached

Albert Head

5 Bedrooms

1 Bathroom

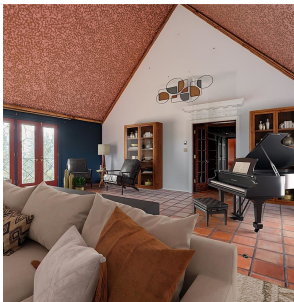
3,725 SF

44,431 SF Lot

FEATURES

Year Built: 1984

Listed By: RE/MAX Camosun



rennie