

107 258 Nelson's Court, New Westminster

\$828,000



Welcome to ONE of a kind 2 bed 2 bath CORNER & GROUND Garden level OASIS condo HOME at The Columbia @ Brewery District by Wesgroup. MASSIVE largest in building wrap-around 483 sq ft OUTDOOR PATIO with a view of Fraser River and Mt Baker. Feels like a Townhome w/additional Private Entry from outside. Walk @ NEW Sapperton COMMUNITY & steps to Sapperton Station – minutes to Vancouver DT. North West facing home, C4* Plan, OPEN interior space, amazing Quartz Countertop Breakfast BAR, Gorgeous Kitchen-Aid, Kohler faucets, spacious living, dining areas & comes with an UPGRADED laminate flooring, 2 STORAGE unit, Large Parking Space and much more. Open house Sat and Sunday November 23 and 24, 2024 between 2:00-4:00pm

KEY INFORMATION

MLS® R2942055

Residential Attached

Sapperton

2 Bedrooms

2 Bathrooms

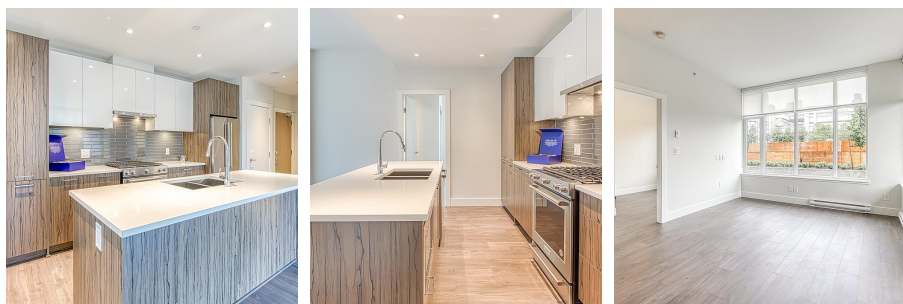
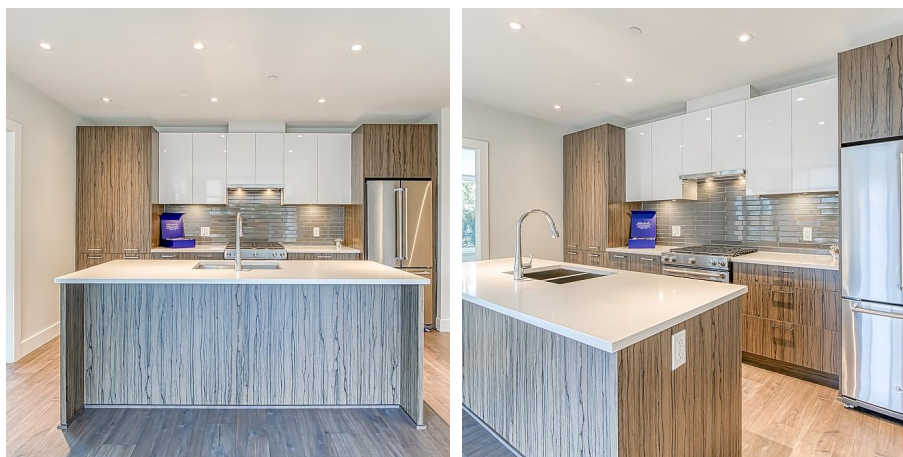
848 SF

\$529.78 Maintenance Fees

FEATURES

Year Built: 2020

Listed By: RE/MAX Blueprint



rennie