

64 7488 Southwynde Avenue, Burnaby

\$849,800



Discover the perfect blend of comfort & style in this beautifully updated 2-bed 1.5-bathroom LedgeStone townhome. With 1,021 sq ft of open-concept living, this upper unit offers a modern lifestyle with thoughtful upgrades made in 2018, including high-end Bosch & KitchenAid appliances, updated washer & dryer, updated lighting, a refreshed bathroom, & sleek laminate flooring throughout. The spacious 265 sq ft rooftop deck is a dream for entertaining or soaking up the sun! Located in a convenient area with nearby schools (Taylor Park Elementary, Byrne Creek Secondary), dog parks, courts, playgrounds, & trails. Quick access to Edmonds Skytrain, Marine Way Market, and dining like Cactus Club. Features include storage, two tandem parking spots, shared EV charging, and pets allowed.

KEY INFORMATION

MLS® R2942505

Residential Attached

South Slope

2 Bedrooms

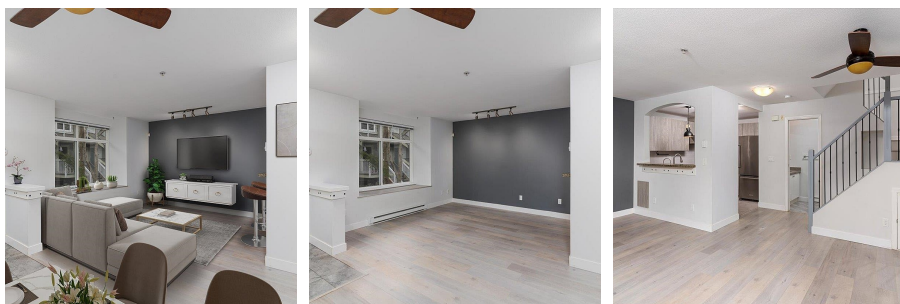
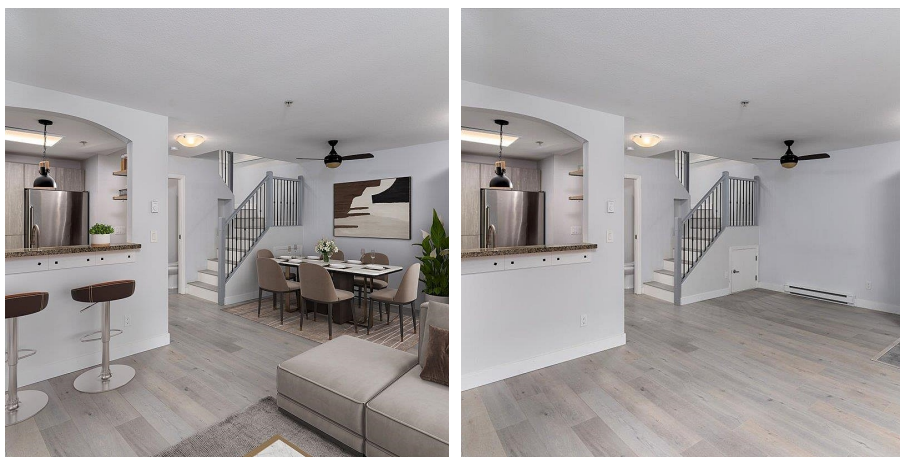
2 Bathrooms

1,021 SF

FEATURES

Year Built: 2003

Listed By: eXp Realty



rennie