

7480 Cariboo Road, Burnaby

\$4,000,000



Investor Alert! Rare Land Assembly Opportunity! Exceptional development potential awaits with this land assembly, including this property and neighboring lots at 7474, 7490 and 7498. Located in central Burnaby, just minutes from Highway 1, SFU, and Costco, this project offer prime accessibility and urban convenience. Ideal for multi-family residential or other approved developments, this is a unique chance to shape a key area in Burnaby's vibrant landscape. Don't miss out on this rare opportunity!

KEY INFORMATION

MLS® R2942481

Residential Detached

The Crest

4 Bedrooms

4 Bathrooms

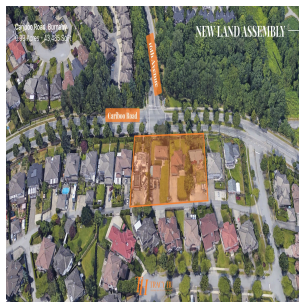
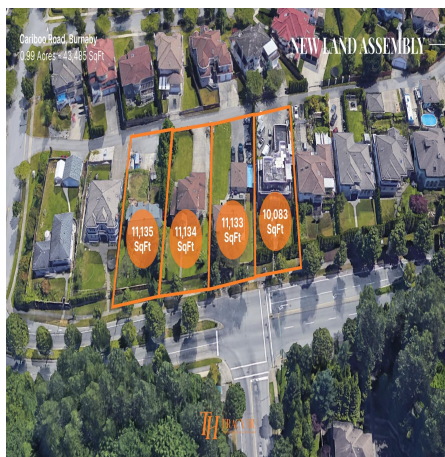
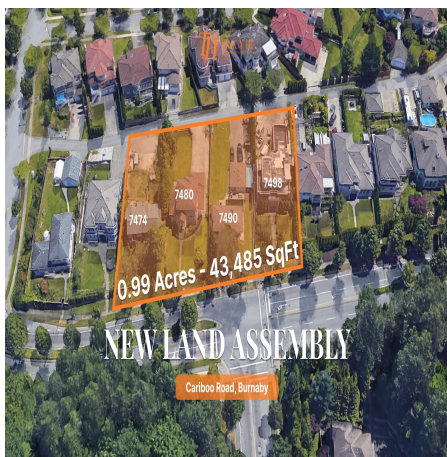
2,401 SF

11,151 SF Lot

FEATURES

Year Built: 1999

Listed By: LeHomes Realty Premier



rennie