

2616 St Gallen Way, Abbotsford

\$1,399,888



FIRST TIME ON MARKET! LOCATED ON GLEN MOUNTAIN IN ABBOTSFORD, THIS BUILDERS OWN HOME BOASTS 6 BDRM 3 BATH OVER 4000 SQFT VIEW HOME IS STUNNING. QUIET, PRIVATE AND SHELTERED. VERY UNIQUE 5 LEVEL HOME WITH GLEAMING WOOD FLOORS, OPEN STAIRCASE, 4 PATIO/BALCONIES, GORGEOUS LANDSCAPING, SIGNIFICANT UPGRADES FROM ELECTRICAL/LIGHTING/PLUMBING, PAINT, INTERIOR DOORS, RAILINGS, AND NEW DECKS TO MENTION A FEW! GREAT ROOF LINE WITH LOTS OF WINDOWS FOR BIG, BRIGHT ROOMS. HUGE KITCHEN/DINING AREA OVERLOOKS BEAUTIFUL YARD WITH KOI POND AND TENNIS/BASKETBALL COURT! HUGE MSTR SUITE WITH GORGEOUS ENSUITE! 2 CAR GARAGE WITH EXTRA STALL FOR TOYS! CLOSE TO SEVEN OAKS SHOPPING CENTRE, ABBY CENTRE FOR SPORTS & ENTERTAINMENT, PARKS, RECREATIONAL FACILITIES AND THE UNIVERSITY OF FRASER VALLEY.



KEY INFORMATION

MLS® R2942533

Residential Detached

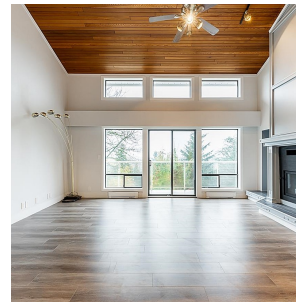
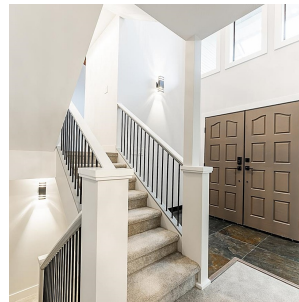
Abbotsford East

7 Bedrooms

4 Bathrooms

4,020 SF

10,450 SF Lot



FEATURES

Year Built: 1981

Views: CITY

Listed By: RE/MAX Heights Realty

rennie