

7474 Cariboo Road, Burnaby

\$4,000,000



Investor Alert! Rare Land Assembly Opportunity! Exceptional development potential awaits with this land assembly, including this property and neighboring lots at 7480, 7490 and 7498. Located in central Burnaby, just minutes from Highway 1, SFU, and Costco, this project offer prime accessibility and urban convenience. Ideal for multi-family residential or other approved developments, this is a unique chance to shape a key area in Burnaby's vibrant landscape. Don't miss out on this rare opportunity!

KEY INFORMATION

MLS® R2942584

Residential Detached

The Crest

5 Bedrooms

1 Bathroom

2,515 SF

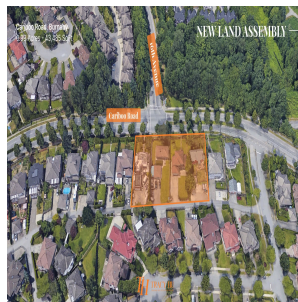
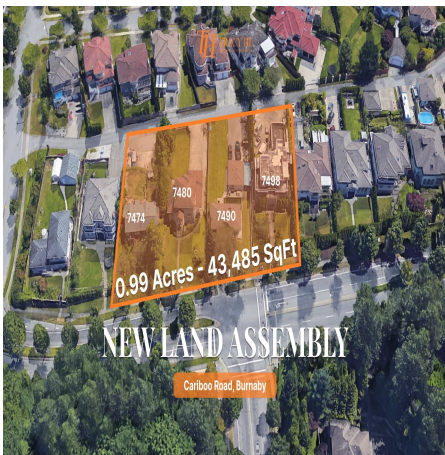
11,151 SF Lot

FEATURES

Year Built: 1950

Views: MOUNTAINS

Listed By: LeHomes Realty Premier



rennie