

# 2006 455 Sw Marine Drive, Vancouver

\$599,000



Welcome to W1, an elegant and modern 1 BED +DEN unit. Ideally located in the heart of Vancouver's vibrant Marine Gateway neighborhood. Open-concept layout, featuring a HUGE Balcony overlooking Open West Facing Sunset Views. Oversized Windows, and Quality Finishes throughout. The kitchen is well-equipped with stainless Miele appliances and plenty of cabinetry. Additional features include In-Suite Laundry, Air Conditioning, and access to building Amenities such as 24-hr Concierge, fully-equipped Gym, outdoor Garden terrace, Karaoke room, Meeting room, Resident's Lounge, and more! Only steps to transit, shops, restaurants, and daily necessities. Parking available for rent \$120/month. Perfect for first-time buyers, students, professionals & investors! Open House: Nov 16 & 17 (Sat & Sun), 2-4PM

## KEY INFORMATION

MLS® R2942713

Residential Attached

Marpole

1 Bedroom

1 Bathroom

505 SF

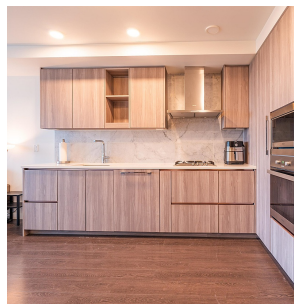
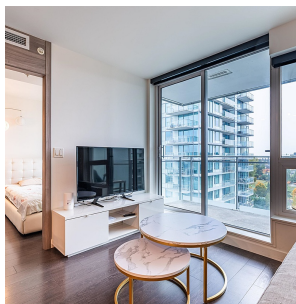
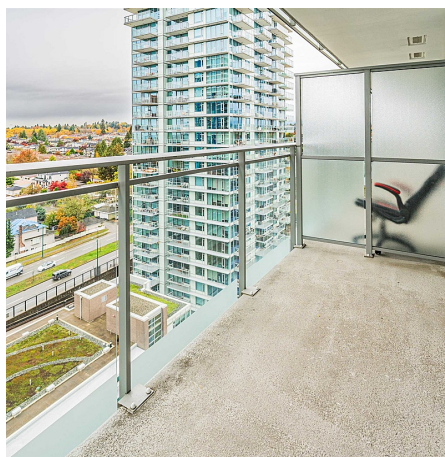
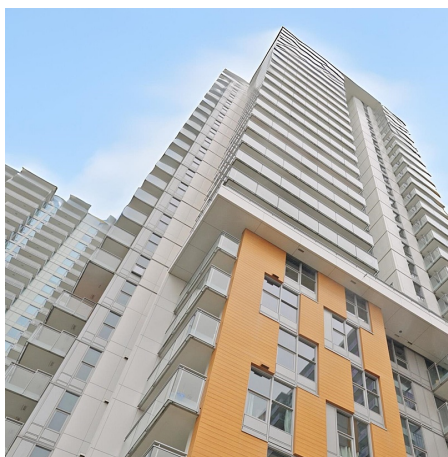
\$425.93 Maintenance Fees

## FEATURES

Year Built: 2019

Views: City

Listed By: rennie & associates realty ltd.



**Petra Misianova**  
604.440.7650  
pmisianova@rennie.com  
rennie.com/petramisianova



**Carrie Tsang** PREC\*  
778.865.5622  
ctsang@rennie.com  
rennie.com/carrietsang



**Bien**  
604.603.2  
bmatute@rennie.com

**rennie**