

# 2103 885 Cambie Street, Vancouver

\$1,838,000



Embrace upscale Yaletown living at The Smithe by BOFFO! This impressive 2 bedroom, 2 bathroom suite faces south, offering views of BC Place and a hint of water. Includes 1 parking spot and storage locker. The home showcases sophisticated detail like fully tiled marble floors, a Savant smart home system with integrated Nest thermostats, air conditioning, custom Italian cabinetry and illuminated built-in wardrobes. Bathrooms feature heated floors, and the spacious patio is perfect for relaxation. Equipped with premium Wolf and Sub-Zero appliances, plus a wine fridge. Residents enjoy incredible amenities: a full-service concierge, over 4,000 square feet of indoor and outdoor lounges, a fitness center, and a unique bike elevator with a workshop. Located just steps from EVERYTHING!

## KEY INFORMATION

MLS® R2942732

Residential Attached

Downtown

2 Bedrooms

2 Bathrooms

1,008 SF

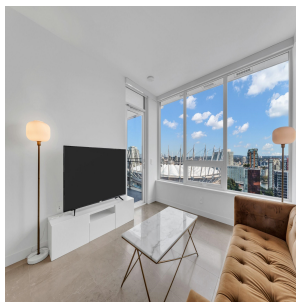
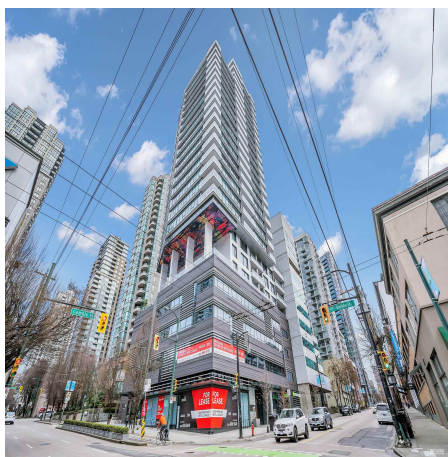
\$761.35 Maintenance Fees

## FEATURES

Year Built: 2021

Views: City, Water

Listed By: Sutton Group-West Coast Realty



rennie