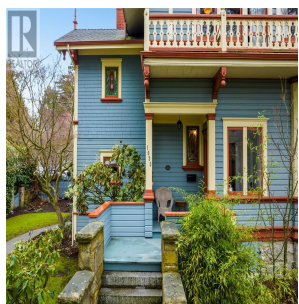


# 1023 St. Charles St, Victoria

\$2,475,000



Welcome to Inglehurst, designed by Samuel Maclure as a timeless architectural masterpiece! Old world charisma is enhanced with modern conveniences, in this historic estate. Original features such as vibrant stained glass, cast iron radiators and elegant hardwood floors pay homage to the original design. Contemporary luxuries ensure this beautiful home is comfortable and well appointed. Manicured gardens lead to the entry, which flows to the grand foyer and showcases the breathtaking interior. The bright interior is flooded with natural light and impresses with every glance. The chef's kitchen has been modernized with upscale appliances, a central island, quality cabinetry, plenty of counter space and an adjacent eating area with garden views. The generously sized living room features a fireplace and leads to the dining room, also with a fireplace. A cozy family room, office/den and 2pc bath complete the main. Above, an enviable primary bedroom with fireplace and walk-in closet. 2 more bedrooms and 2 full bathrooms complete the upper level. Outside, the wrap around deck overlooks the tranquil yard with mature trees for privacy and interlocking brick patio. Truly an outdoor oasis within the city! Prime location with great walkability to surrounding amenities that include: nature parks, restaurants, shopping, transit and more! (id:56120)

## KEY INFORMATION

MLS® 980297

Residential Detached

Rockland

3 Bedrooms

3 Bathrooms

3,315 SF

15,769 SF Lot

## FEATURES

Year Built: 1896

rennie