

12690 256 Street, Maple Ridge

\$2,588,000



This 9.7 Acres property provides country living surrounded by many urban amenities. The house is a one level rancher style home with almost 1300 SQFT of floor space. The property has a massive (10,000) square foot barn/warehouse equipped with new metal roof and siding. A commercial electrical generator value at well over(\$120,000) venting and HVAC system. Over \$75,000 spent on electrical upgrades. The barn has a separate meter and can be rented out separately. The property is fully fenced and can be use as for faming or livestock, kennel, garden, crop production, storage, and much more. The land is mainly flat.RS-3 Zoning with city water. All showing by appointment ONLY.

KEY INFORMATION

MLS® R2942801

Residential Detached

Websters Corners

3 Bedrooms

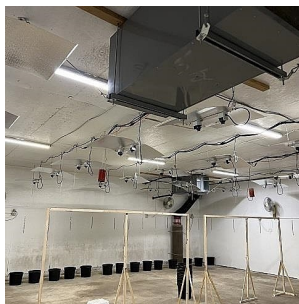
1 Bathroom

1,296 SF

FEATURES

Year Built: 1956

Listed By: Amex Broadway West Realty



rennie