

414 2550 Garden Drive, Vancouver

\$1,149,900



This stunning 2-bedroom suite at 2550 Garden Drive features 916 sqft of open and light filled space. Incredible construction quality from trusted Developer Bucci Developments. Spacious and thoughtfully designed kitchen with premium integrated Fulgor & Milano appliances, wood cabinets and quartz counter. Further features include A/C, HRV system, 9' ceilings, engineered white oak floors, ample storage solutions, built-in laundry station, custom front entry storage niche, roller-shades, USB outlets and more! Steps to Nanaimo St and Commercial Dr., Trout Lake Park and Commercial-Broadway Skytrain. Amenities include a social lounge, outdoor terrace, garden plots and children's play area. One parking and a storage locker included! Pre-assigned penthouse Bike locker also included with this suite!

KEY INFORMATION

MLS® R2942879

Residential Attached

Grandview Woodland

2 Bedrooms

2 Bathrooms

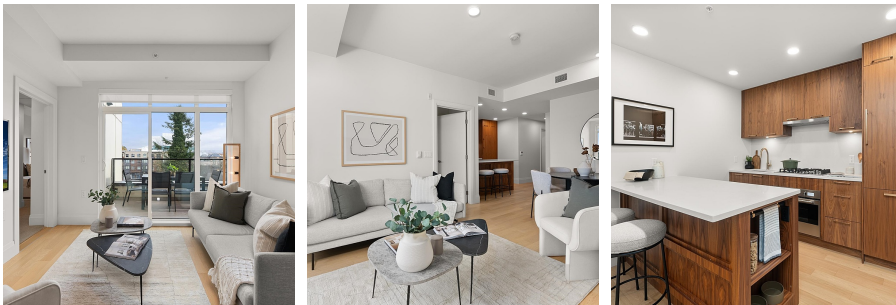
914 SF

\$516.76 Maintenance Fees

FEATURES

Year Built: 2023

Listed By: rennie & associates realty ltd.



Tyler Rodyniuk

778.987.1365

trodyniuk@rennie.com

rennie.com/tylerrodyuniuk

rennie