

8 1442 Vine Road, Pemberton

\$695,000



This is a fantastic updated two bedroom condo in a prime location. Highly sought-after upper-level unit offers a functional floor plan with ample storage options. Breathtaking mountain views of Mount Currie from your private deck and bedroom. Pioneer Junction is one of the most sought after complexes due to the geothermal heating and cooling, low maintenance costs and the amenities building with a private gym. This condo is move in ready and has everything needed for you to call it home.

KEY INFORMATION

MLS® R2943020

Residential Attached

Pemberton

2 Bedrooms

1 Bathroom

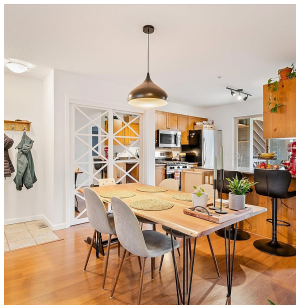
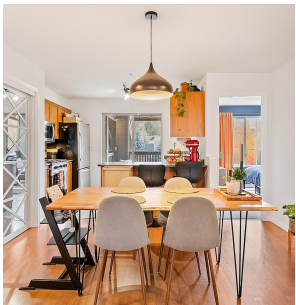
791 SF

\$232.42 Maintenance Fees

FEATURES

Year Built: 2004

Listed By: rennie & associates realty ltd.



Dylan Layzell
604.905.9799
dlayzell@rennie.com
rennie.com/dylanlayzell

rennie