

2629 Balsam Lane, Lumby

\$499,000



Discover this charming 4-bedroom, 2-bathroom half duplex nestled in the heart of Lumby, BC, with stunning views of Saddle Mountain. The updated main level features a bright, welcoming space with two bedrooms, one bathroom, a fully-equipped kitchen, and a cozy living room boasting a new gas fireplace and new windows to maximize natural light. The basement offers an additional bedroom for the main house and a fully self-contained 1-bedroom, 1-bathroom suite with a separate entrance, perfect for guests or rental income. The shared laundry room includes separate washers and dryers for convenience. This property also includes ample parking out front, a newly constructed carport with a metal roof, and a fully fenced backyard providing plenty of room for pets or children to play. Don't miss this opportunity to experience the perfect blend of comfort and convenience in a beautiful setting. (id:56120)

KEY INFORMATION

MLS® 10327822

Residential Attached

Lumby

4 Bedrooms

2 Bathrooms

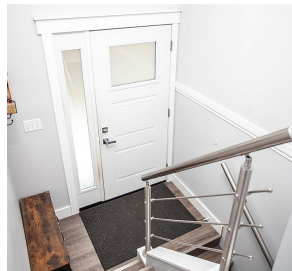
1,642 SF

5,227 SF Lot

FEATURES

Year Built: 1977

Listed By: Century 21 Excellence Realty



rennie