

219 Townsend Place, New Westminster

\$1,150,000



Welcome to this beautiful piece of paradise in the heart of New Westminster's Queens Park neighborhood. This rare piece of land is available and comes with full drawings and renderings for a beautiful new home. Services are done and the home is ready to be built with your ideas to make it customized to your liking. Please note the cost is for the LAND only and the build cost will be additional. Home will be built to suit.

KEY INFORMATION

MLS® R2942748

Residential Detached

Queen's Park

1 Bedroom

0 Bathrooms

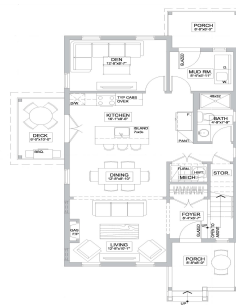
1,680 SF

2,362 SF Lot

FEATURES

Year Built: 9999

Listed By: Macdonald Realty (Surrey/152)



rennie