

2201 680 Quayside Drive, New Westminster

\$975,000



Welcome to Pier West a stunning new waterfront by Bosa Development. This spacious west facing 2 bed, 2 bath boasts panoramic views from every room. The luxury kitchen includes Caesarstone waterfall countertops and premium Bosch appliances. Extra features include upgraded European oak hardwood floors, A/C & heated bathroom floors. 1 parking & 1 storage locker are included. Over 10,000 sf of amenities including 24 hour concierge, fitness centre, steam rm & sauna, spectacular lounge w/remarkable outside terrace and a private dining rm with a gourmet kitchen. Just steps to the Sky Train, Shops, Restaurants and all of the amenities that New Westminster has to offer. This home is truly a stunning modern architectural landmark for a most desired living experience. 2/5/10 New Home Warranty.

KEY INFORMATION

MLS® R2943189

Residential Attached

Quay

2 Bedrooms

2 Bathrooms

963 SF

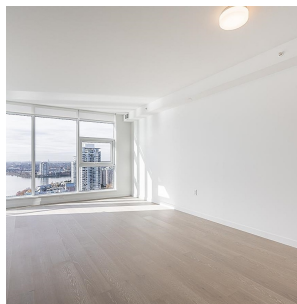
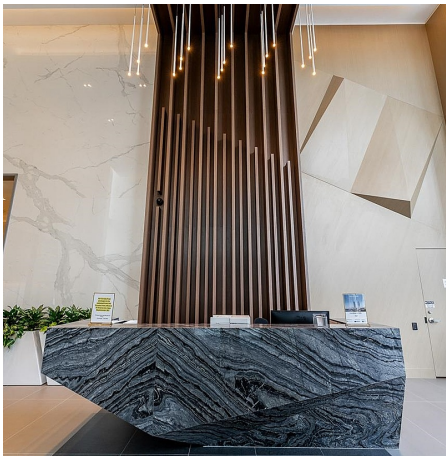
\$499.07 Maintenance Fees

FEATURES

Year Built: 2024

Views: River, City, Mountain

Listed By: rennie & associates realty ltd.



Harvey Kardos

604.328.3499

hkardos@rennie.com

rennie.com/harveykardos

rennie