

# 79-85-89-95 Wentwich Rd, Langford

\$5,300,000



This exceptional 63,161 sq ft land assembly in Langford's sought-after Mill Hill neighborhood offers an unparalleled investment opportunity on Vancouver Island. Strategically located near amenities and with easy highway access, this flat land is primed for RM2A rezoning, unlocking the potential for high-density townhome development. The City of Langford's support for RM2A rezoning, coupled with the site's minimal site prep requirements and private green space, makes this an ideal investment for developers seeking to capitalize on Victoria's thriving real estate market. 2579, 2585, 2589, 2595 Wentwich (id:56120)

## KEY INFORMATION

MLS® 980372

Multifamily

Mill Hill

0 Bedrooms

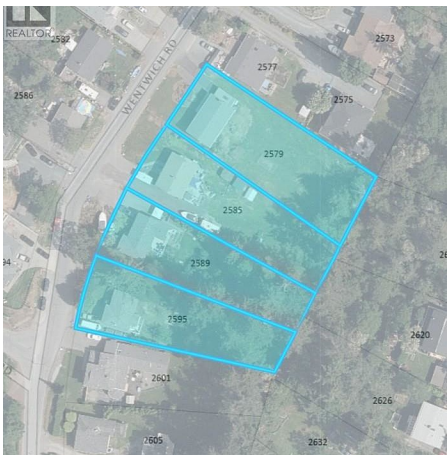
0 Bathrooms

0 SF

63,162 SF Lot

## FEATURES

Listed By: RE/MAX Island Properties



rennie