

110 3226 Shelbourne St, Saanich

\$565,900



With construction underway, Oak & Stone by award winning Abstract Developments sets the standard for vibrant, west coast living. Centrally located in the newly revitalized Shelbourne Valley, you're minutes from the University of Victoria, Camosun College, parks, recreation, and shopping. This 562 sq ft Jr 2 Bed, 1 Bath home is highlighted by over-height ceilings, expansive windows and a spacious west facing patio perfect for soaking up the afternoon sun. Show off your cooking skills in your gourmet kitchen featuring quartz countertops, under cabinet lighting, matte black hardware and a premium stainless steel appliance package complemented by cabinetry in a choice of either white and woodgrain or Fjord green slim shaker. In-home flex space with window offers a versatile area that can be used in various ways to suit your lifestyle and needs. Includes one parking space and cycling-friendly amenities including dedicate secured bike storage with e-bike charging. Price + GST. (id:56120)

KEY INFORMATION

MLS® 979716

Residential Attached

Cedar Hill

2 Bedrooms

1 Bathroom

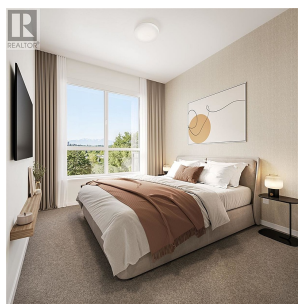
609 SF

756 SF Lot

FEATURES

Year Built: 2026

Listed By: Newport Realty Ltd.



rennie