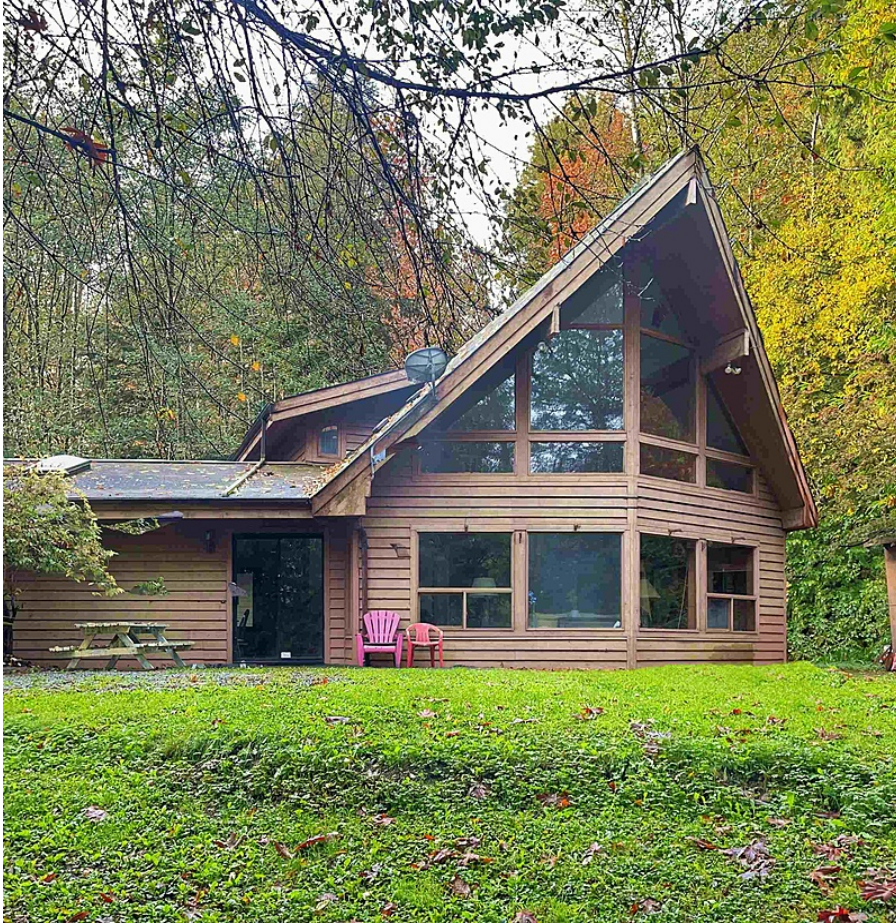


43583 Ohman Road, Mission

\$1,198,800



Unique chalet-style cedar home on 4.76 private acres, ideally located near Harrison Hot Springs and skiing at Sasquatch Mountain. This custom cedar home features vaulted cathedral ceilings and a wall of windows capturing potential breathtaking mountain views. The spacious 27x17 primary bedroom includes a luxurious 5-piece ensuite with a jetted Jacuzzi tub and corner shower for ultimate relaxation. Cozy airtight wood fireplace adds warmth and elegance. The property includes a detached double garage, PLUS a versatile 30x20 workshop with 220 wiring, double sink, and a bathroom—perfect for a guest house conversion. Quality cedar craftsmanship throughout, with efficient in-floor radiant heat. Well priced and Only 20 minutes from Mission, this beautiful property is a must-see to believe!

KEY INFORMATION

MLS® R2943254

Residential Detached

Lake Errock

3 Bedrooms

2 Bathrooms

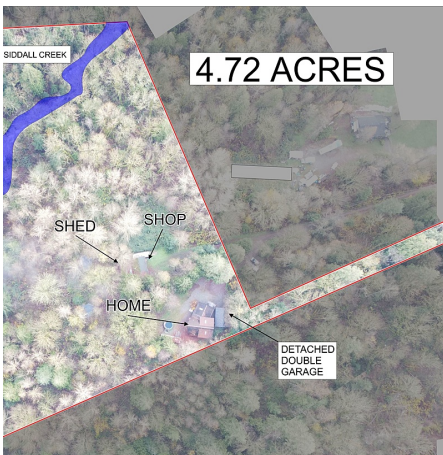
1,915 SF

205,472 SF Lot

FEATURES

Year Built: 1990

Listed By: RE/MAX Magnolia



rennie