

# 7498 Cariboo Road, Burnaby

\$4,000,000



Investor Alert! Rare Land Assembly Opportunity! Exceptional development potential awaits with this land assembly, including this property and neighboring lots at 7474, 7480 and 7490 Located in central Burnaby, just minutes from Highway 1, SFU, and Costco, this project offer prime accessibility and urban convenience. Ideal for multi-family residential or other approved developments, this is a unique chance to shape a key area in Burnaby's vibrant landscape. Don't miss out on this rare opportunity!

## KEY INFORMATION

MLS® R2942897

Residential Detached

The Crest

7 Bedrooms

0 Bathrooms

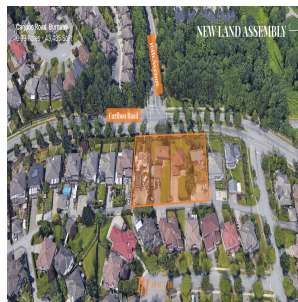
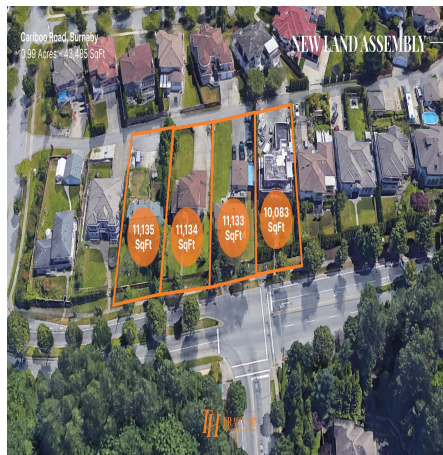
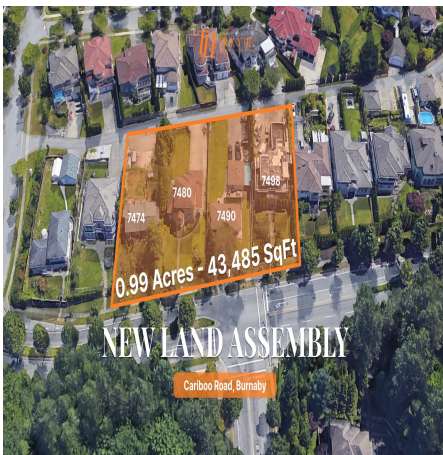
4,577 SF

10,062 SF Lot

## FEATURES

Year Built: 1990

Listed By: LeHomes Realty Premier



rennie