

214 322 E 15th Avenue, Vancouver

\$1,239,900



E15 JUST OFF MAIN by OpenForm Properties – The Final Release! This 2-bed, 2-bath townhome, designed by MA+HG Architects, spans two levels with sleek interiors by Cristina Oberti and large windows that flood the space with natural light. A secure entry opens from the tranquil inner courtyard, and a peaceful patio extends off the main living area. The kitchen offers plenty of storage, a gas cooktop, and fully intergrated appliances by Fisher&Paykel. The bold exterior, featuring art by Scott Sueme, reflects the vibrant Mount Pleasant community. Steps from Main Street and minutes from downtown, E15 blends modern design with a creative edge. Built by Urban One, landscaped by Considered Design. Includes parking, storage, and a bike locker. Move-in ready with GST savings for a limited time!

KEY INFORMATION

MLS® R2943535

Residential Attached

Mount Pleasant

2 Bedrooms

2 Bathrooms

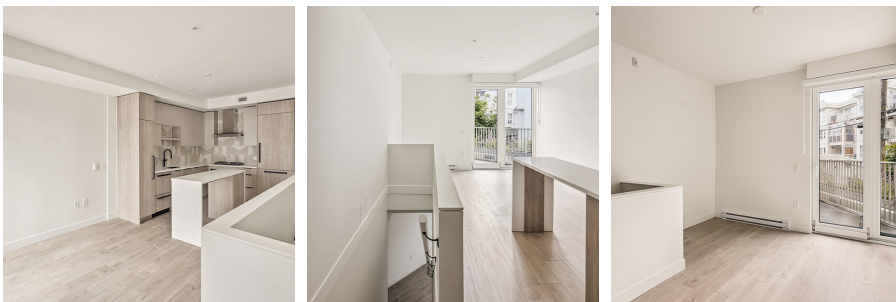
990 SF

FEATURES

Year Built: 2024

Views: Courtyard/Lane

Listed By: rennie & associates realty ltd.



Patrick Campbell

pcampbell@rennie.com
rennie.com/patrickcampbell



Christopher Boyd PREC*

604.351.0533
cboyd@rennie.com
rennie.com/christopherboyd

rennie