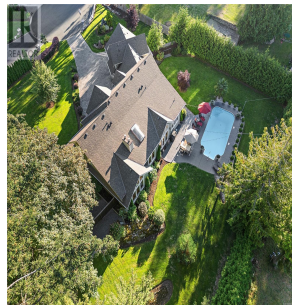


1958 Llewellyn Pl, North Saanich

\$3,199,000



Welcome to your secluded oasis—a custom-built, 4,350 sq ft home on a private 0.75-acre lot, surrounded by mature trees and lush greenery. Combining style and functionality, this property is designed with luxury in every detail, featuring manicured gardens, expansive lawns, and peaceful forest views. Here, you can escape the bustle of daily life while remaining close to essential amenities. Inside, two spacious levels cater to both family living and elegant entertaining. The main floor boasts 10-foot ceilings and 8-foot doorways, adding openness and grandeur. The primary suite offers a spa-like ensuite with high-end finishes, ample closet space, and large windows to capture natural light. A conveniently located laundry room and a large den/office create ideal spaces for work and relaxation. For added flexibility, a 700 sq ft suite above the three-bay garage serves as an ideal space for guests, extended family, or potential rental opportunities. This suite is both private and easily accessible, providing versatile living options. The heart of the home is the open-concept living and dining area with vaulted ceilings, skylights, and rustic beams for added warmth. The chef's kitchen features soft white quartz countertops with subtle grey veining, shaker cabinets, premium stainless steel appliances, and a six-burner gas range, plus the bonus of a Butler's pantry. A large island is perfect for casual dining, meal prep, or gathering with family and friends. Step outside to a sunny backyard that's ideal for relaxation and entertaining. A sparkling pool, ample seating, and lounge areas make it the perfect spot for family fun or gatherings with friends. This outdoor oasis offers a blend of sun, shade, and manicured landscaping, providing a sanctuary for outdoor living. (id:56120)



KEY INFORMATION

MLS® 980353

Residential Detached

Dean Park

rennie