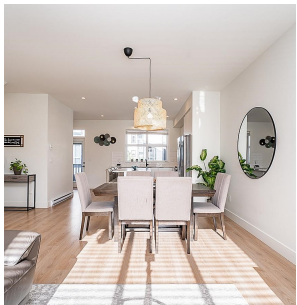


59 19255 Aloha Drive, Surrey

\$954,900



Beautifully finished, customized and only 4 years young, this unit is situated in desirable Clayton Heights, perfect for families or as an investment. This home is designed with an efficient, open layout, is ideally situated on Aloha Dr, (away from 192nd st and 72nd ave) and is directly south-facing, receiving unobstructed natural light all day. 3 full-sized bedrooms upstairs featuring a large, bright Primary Bedroom, and an upgraded 4th bedroom + full bath on the ground floor. Other upgrades include laminate floors in the upstairs hallway and stairwells, Gas Range, and Gas hook-up for barbecue on balcony. This complex is energy-star rated, making this home cost-efficient, and reduces carbon footprint. A few blocks away from the future skytrain (Clayton Station). Call today!

KEY INFORMATION

MLS® R2943336

Residential Attached

Clayton

4 Bedrooms

4 Bathrooms

1,650 SF

FEATURES

Year Built: 2020

Listed By: KIC Realty Inc

rennie