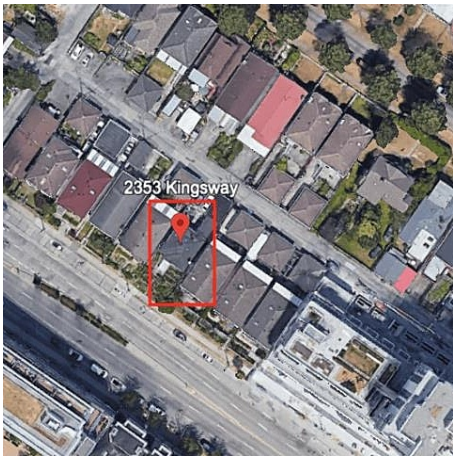


2353 Kingsway, Vancouver

\$2,999,999



Unlock the potential of this exceptional land assembly. 2339 KINGSWAY, 2375 Kingsway, 2361 Kingsway, 2335 Kingsway and 2353 Kingsway are listed with potential of assembly. This prime site offers excellent development opportunities with the potential for multi-family residential, mixed-use, or commercial projects. Strategically located along Kingsway with easy access to transit, amenities, and key destinations, this site is poised for significant growth. With high demand for new development in the area, this is an opportunity to capitalize on Vancouver's ongoing transformation.

KEY INFORMATION

MLS® R2943863

Residential Detached

Collingwood

4 Bedrooms

2 Bathrooms

1,530 SF

3,488 SF Lot

FEATURES

Year Built: 1951

Listed By: eXp Realty

rennie