

1666 Mcpherson Drive, Port Coquitlam

\$1,500,000



Fully renovated beautiful house on a quiet street in Port Coquitlam's most desirable neighbourhood - Citadel. This spacious home features an excellent layout with 3 bdrm/2bath on the main floor with direct access to a large fully covered patio and backyard; panoramic views; ground level 2 bdrm/1 bath suite can be a great mortgage helper or in-law/nanny suite; extra big double garage (21'x31') with over-height 10'6 ceilings! Renovations and upgrades within the last 10-6 years: roof, windows, water heater on demand, patio glass roof, full interior (2 kitchens, 3 bathrooms, floors, light fixtures, etc.). Open houses 2-4pm on Saturday and Sunday, Nov 23 and 24.

KEY INFORMATION

MLS® R2943971

Residential Detached

Citadel

5 Bedrooms

3 Bathrooms

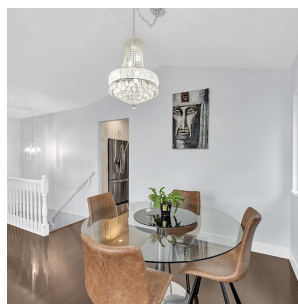
2,445 SF

4,221 SF Lot

FEATURES

Year Built: 1992

Listed By: rennie & associates realty ltd.



Art Seroff PREC*
778.223.0033
aseroff@rennie.com
rennie.com/artseroff

rennie