

66 3552 Victoria Drive, Coquitlam

\$1,279,000



BRIGHT 4BED, 4BATH CORNER END UNIT in Victoria by Mosaic! This Southeast facing unit features 10' ceiling on main living area with large window bringing in plenty of natural light, beautiful modern chef's kitchen with stainless steel appliances, window above the farmhouse kitchen sink, and oversized island. Enjoy morning coffee/afternoon reading in a sunny open den, beautiful views of mountains from spacious bedrooms on top floor and BBQ and outdoor activity on patio in fenced backyard. Versatile bedroom with full ensuite bath on lower level is perfect for a teenager or guests. Side-by-side Double Garage w/ 10' ceiling+2 car driveway are ready for all types of cars/trucks and storage. Walking distance to bus to Coquitlam Centre Skytrain, and schools!

KEY INFORMATION

MLS® R2943945

Residential Attached

Burke Mountain

4 Bedrooms

4 Bathrooms

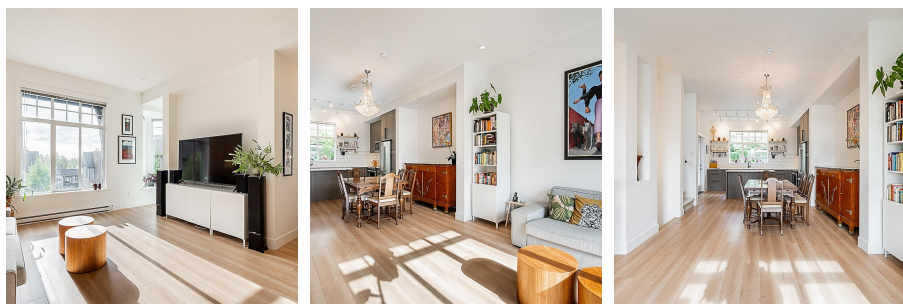
1,831 SF

FEATURES

Year Built: 2021

Views: Mt. Baker

Listed By: Oakwyn Realty Ltd.



rennie