

# 1228 Benneck Way, Port Coquitlam

\$1,699,900



OPEN HOUSE SUNDAY DEC 15TH - 2-4PM.  
CORNER LOT WITH A VIEW! A spacious 3,540 sq ft home in desirable Citadel neighborhood. This beautifully maintained residence features 6 bedrooms and 3 bathrooms across its 2-storey +BSMT layout. Step into a grand vaulted living room flooded with natural light, perfect for hosting gatherings or relaxing with family. The chef's kitchen is adorned with stainless steel appliances and updated countertops, complemented by a large dining area for casual meals. Upstairs, discover a master bedroom retreat with ensuite privileges and his and hers closets. Located near schools, shops, restaurants, and Highway 1 for convenience. Don't miss out on this exceptional home!

## KEY INFORMATION

MLS® R2944151

Residential Detached

Citadel

6 Bedrooms

3 Bathrooms

3,540 SF

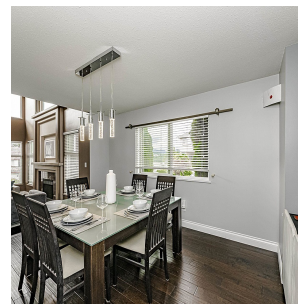
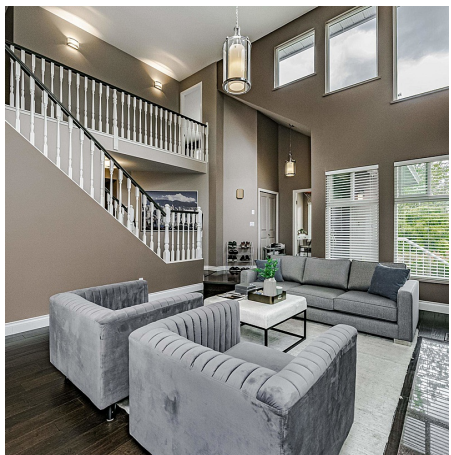
5,280 SF Lot

## FEATURES

Year Built: 1990

Views: Mountains

Listed By: RE/MAX LIFESTYLES REALTY



rennie